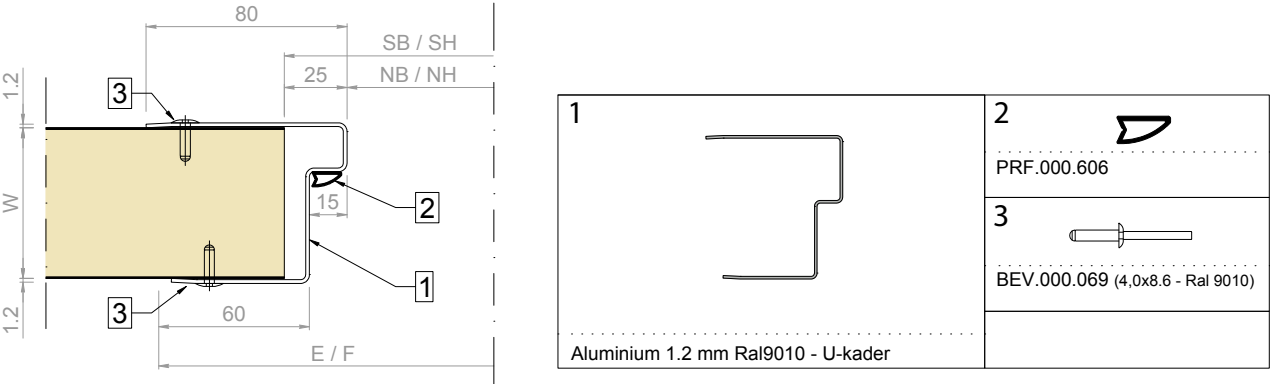


TECHNISCHE  
GEGEVENS

TOEPASSING	Kantoren – laboratoria – sanitaire lokalen – technische ruimtes – productiezones - ...
DEURBLAD	Deur met enkele vleugel Gegalvaniseerde voorgelakte staalplaat - CLEANsafe coating 25µm - RAL9010 Overgeplooid omranding in staalplaat 40 mm polyurethaanschuim (PUR) (CFK-vrij) Afmetingen: - 800 x 2000 mmh - 900 x 2000 mmh
DEURKADER	ALU U-kader 60/80 x 1,2 mm - RAL 9010 12 ponsingen voor bevestiging op het wandpaneel Wanddikte: 60mm
BESLAG	1 Inox kruk per deur 2 Inox scharnieren per deur 1 Inox sluitplaat per deur
VERPAKKING	In een kartonnen doos Deurrubber en deurkruk niet gemonteerd. Montage-accessoires inbegrepen. Scharnieren bevestigd aan het deurkader.



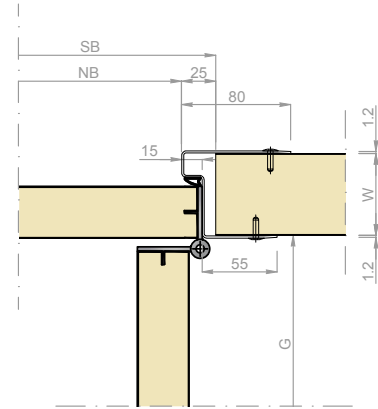
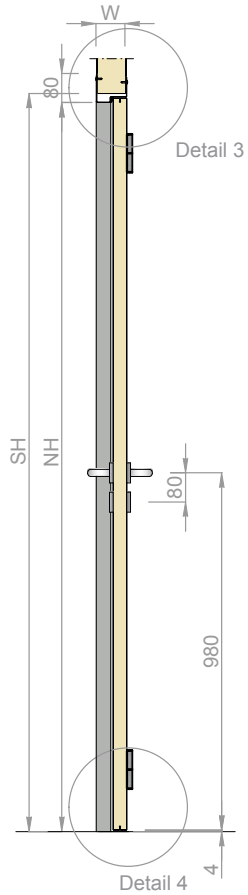
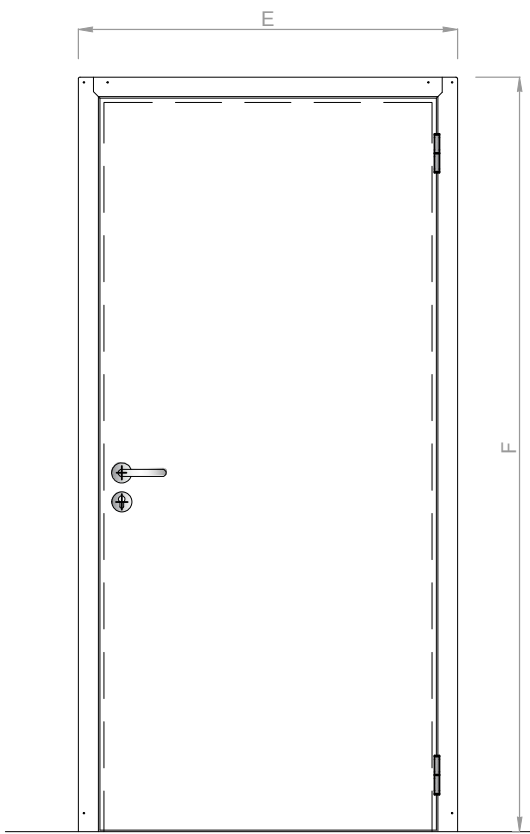
Pontstraat 80  
Waregem zone 11B  
B-8791 Beveren-Leie

T: +32 56 71 04 94  
F: +32 56 70 32 87  
info@isomasters.com  
[www.isomasters.com](http://www.isomasters.com)

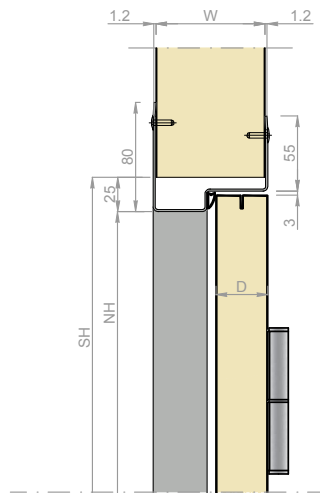


**BBE**  
TECHNISCHE GEGEVENS

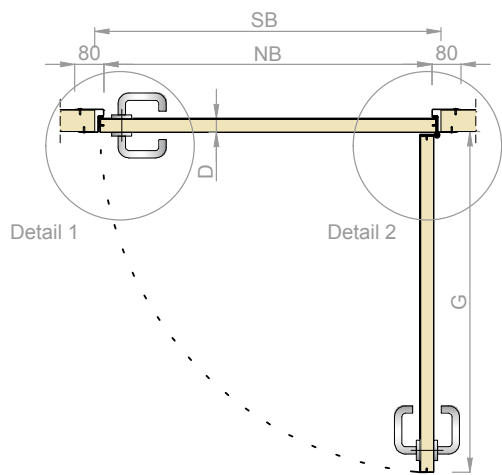
TECHNISCHE  
TEKENINGEN



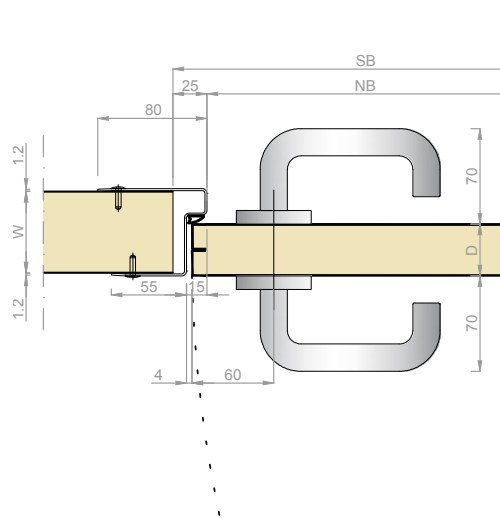
Detail 2



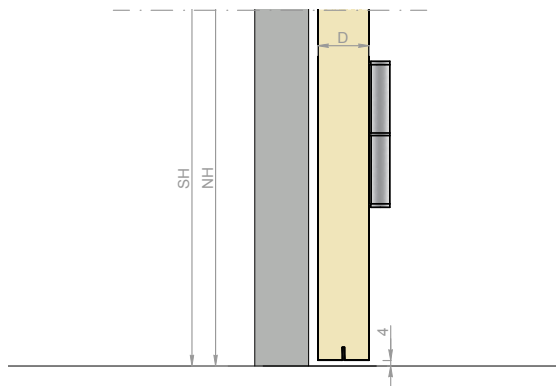
Detail 3



$SB = NB + 50$   
 $SH = NH + 25$   
 $D = 40$   
 $E = NB + 160$   
 $F = NH + 80$   
 $G = NB + 35$   
 $W = 60\text{mm}$



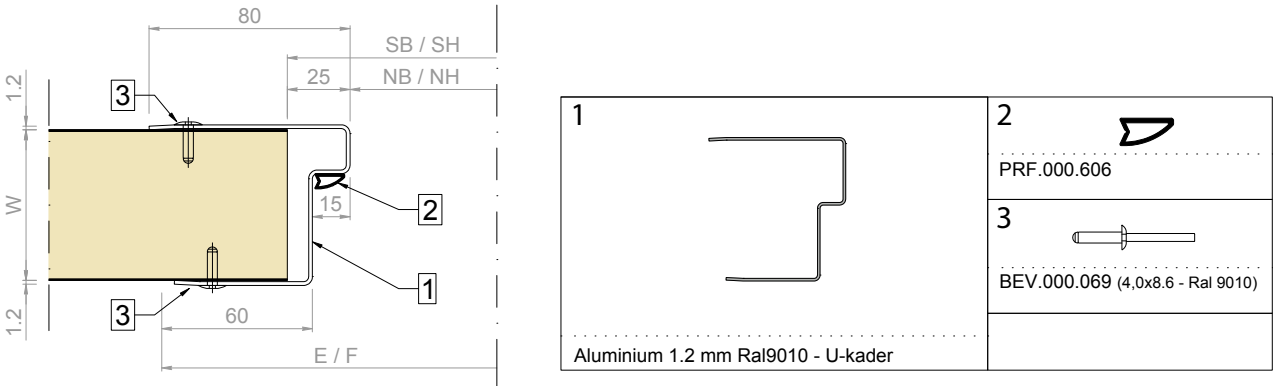
Detail 1



Detail 4

DÉTAILS  
TECHNIQUES

APPLICATION	Bureaux - laboratoires - locaux sanitaires - locaux techniques - zones de production - ...
VANTAIL	Porte à simple battant Acier galvanisé et pré-laqué - revêtement CLEANsafe 25µm - RAL9010 Finition avec un bord plissé en tôle d'acier Mousse isolante polyuréthane (PUR) 40 mm (sans CFC & HCFC) Dimensions : - 800 x 2000 mmh - 900 x 2000 mmh
HUISSERIE DE PORTE	Cadre ALU U 60/80 x 1,2 mm - RAL 9010 12 poinçonnages pour montage sur le panneau de paroi Epaisseur du paroi : 60mm
QUINCAILLERIE	1 poignée en Inox 2 charnières en Inox 1 gâche en Inox
EMBALLAGE	Emballage individuel Joint et poignée de porte non montés. Accessoires de montage inclus. Charnières fixées au cadre de porte.



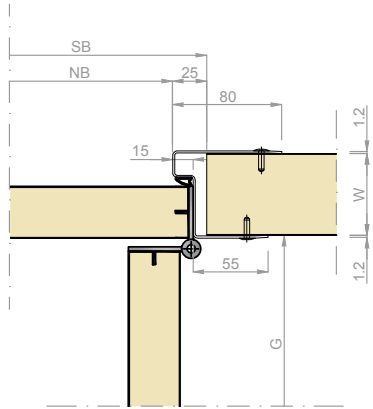
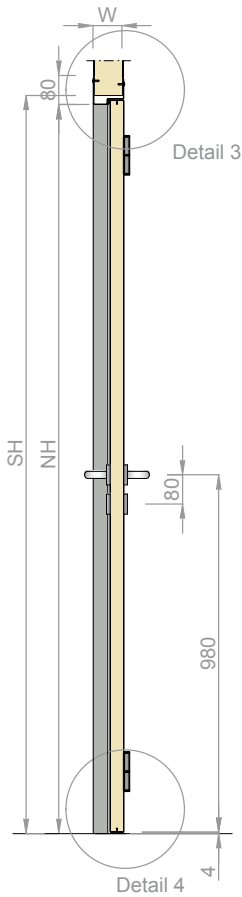
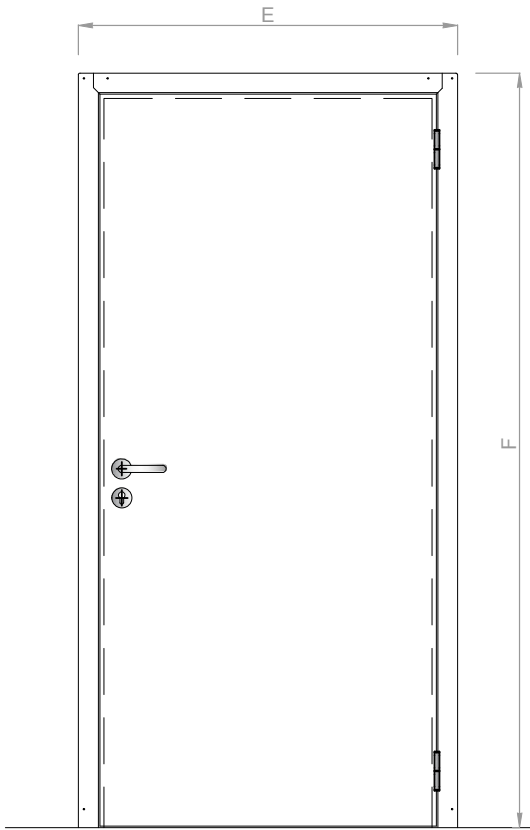
Pontstraat 80  
Waregem zone 11B  
B-8791 Beveren-Leie

T: +32 56 71 04 94  
F: +32 56 70 32 87  
info@isomasters.com  
[www.isomasters.com](http://www.isomasters.com)

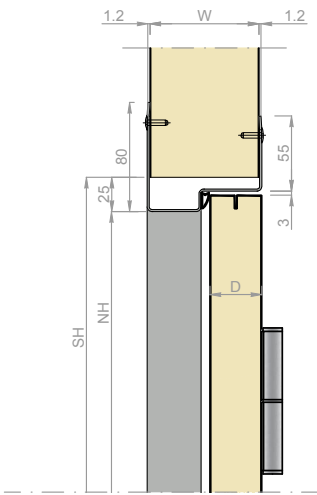


**BBE**  
DÉTAILS TECHNIQUES

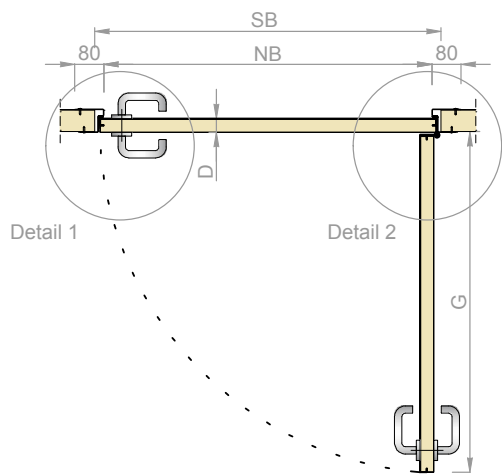
DESSINS  
TECHNIQUES



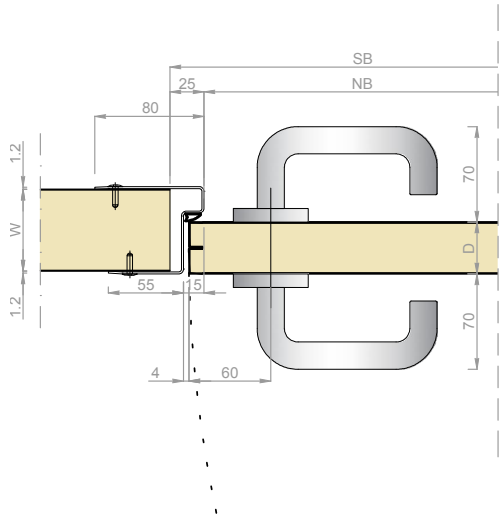
Detail 2



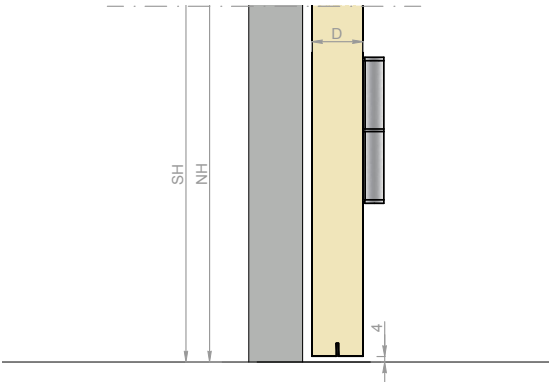
Detail 3



$SB = NB + 50$   
 $SH = NH + 25$   
 $D = 40$   
 $E = NB + 160$   
 $F = NH + 80$   
 $G = NB + 35$   
 $W = 60\text{mm}$



Detail 1

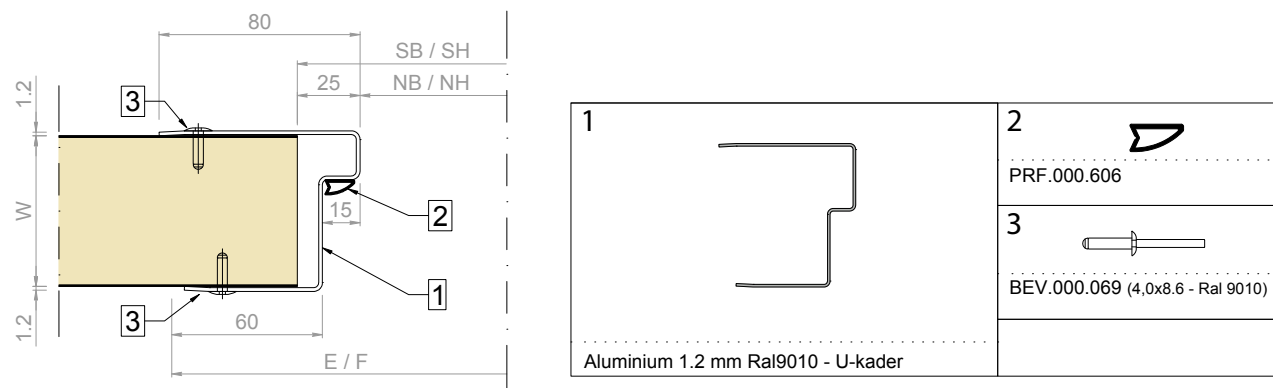


Detail 4



## TECHNICAL DETAILS

<b>APPLICATION</b>	Offices - laboratories - sanitary rooms - technical rooms - production zones - ...
<b>DOOR LEAF</b>	Door with single door leaf Galvanised pre-lacquered steel sheet - CLEANsafe coating 25µm - RAL9010 Finished with a folded edge in steel sheet 40 mm polyurethane foam (PUR) (CFK-free) Dimensions: - 800 x 2000 mmh - 900 x 2000 mmh
<b>DOOR FRAME</b>	ALU U frame 60/80 x 1,2 mm - RAL 9010 12 punches for mounting on the wall panel Wall thickness: 60mm
<b>FITTINGS</b>	1 stainless steel handle per door 2 hinges in stainless steel per door 1 lockplate in stainless steel per door
<b>PACKAGING</b>	In a cardboard box Door handle not mounted. Mounting accessories included. Hinges attached to door frame.



Pontstraat 80  
Waregem zone 11B  
B-8791 Beveren-Leie

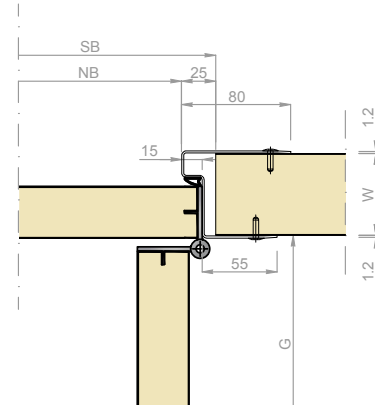
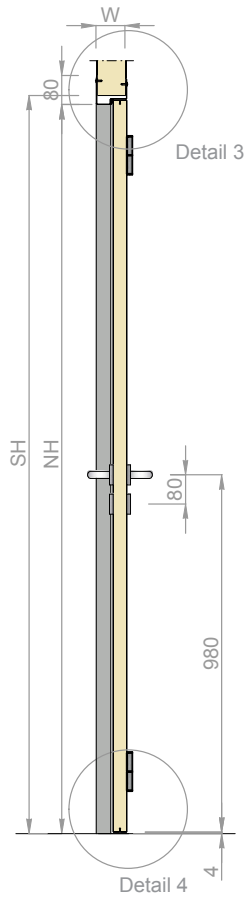
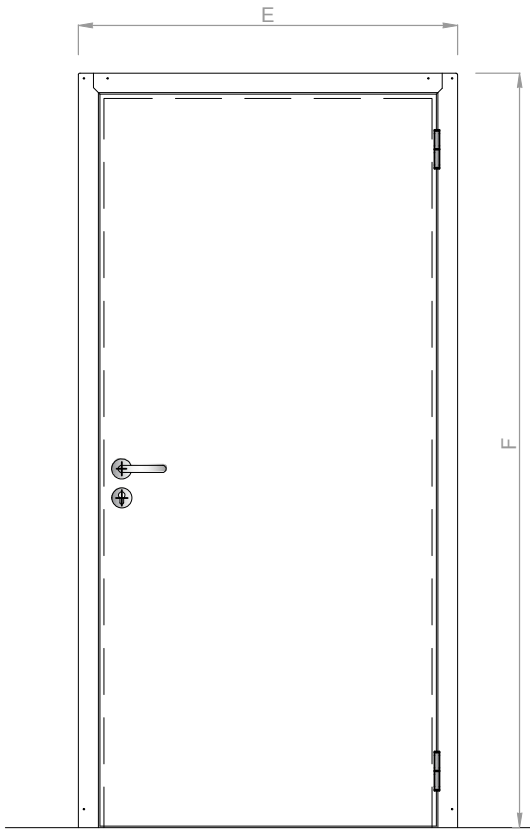
T: +32 56 71 04 94  
F: +32 56 70 32 87  
info@isomasters.com  
**www.isomasters.com**



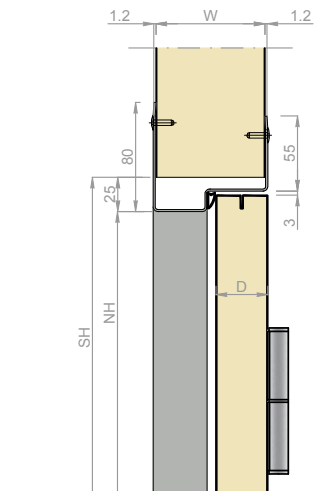
# BBE

## TECHNICAL DETAILS

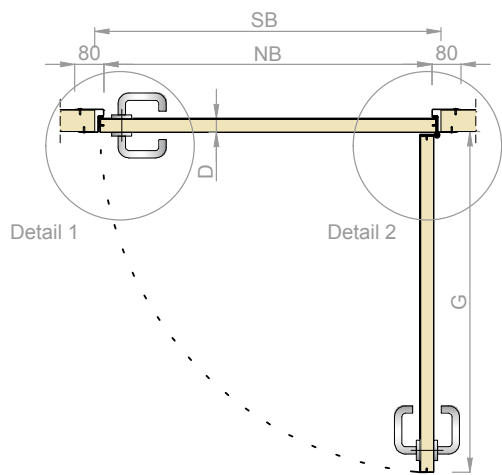
TECHNICAL  
DRAWINGS



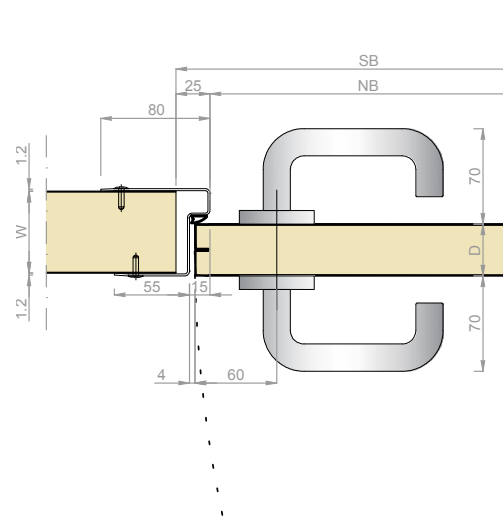
Detail 2



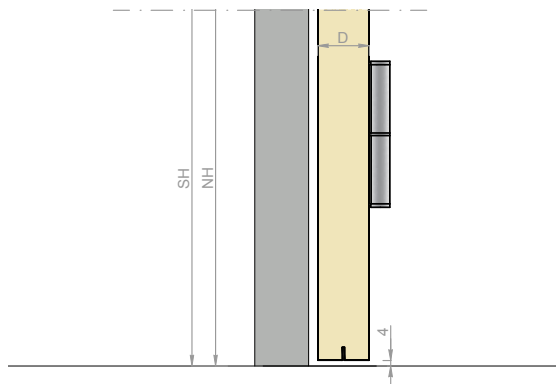
Detail 3



SB = NB + 50  
SH = NH + 25  
D = 40  
E = NB + 160  
F = NH + 80  
G = NB + 35  
W = 60mm



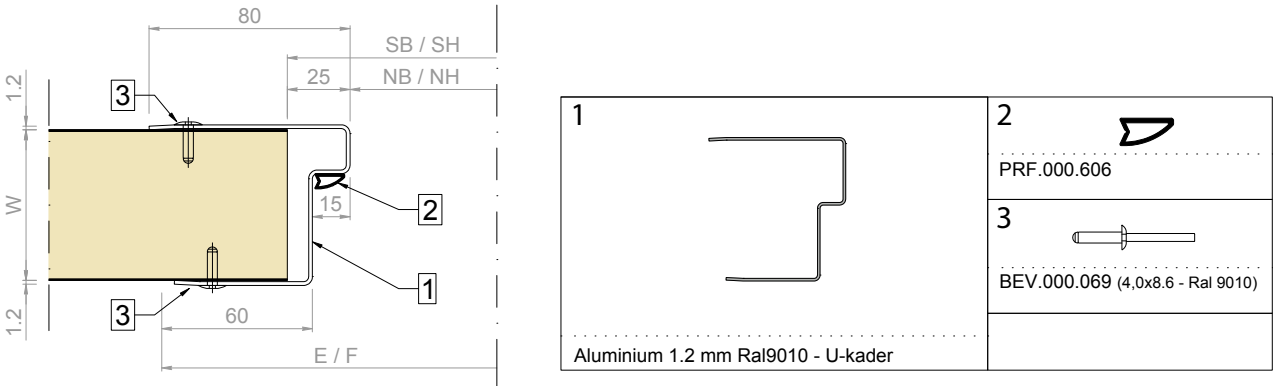
Detail 1



Detail 4

TECHNISCHE DATEN

ANWENDUNG	Büros - Labors - Sanitärräume - Technikräume - Produktionszonen - ...
TÜRBLATT	Einflügelig verzinktes Stahlblech vorbehandelt - CLEANsafe coating 25µm - RAL9010 Umgebogener Kante aus Stahlblech Polyurethan-Hartschaum (PUR) 40 mm PUR (FCKW-frei) Abmessungen: - 800 x 2000 mmh - 900 x 2000 mmh
TÜRRAHMEN	ALU U-Rahmen: 60/80 x 1,2 mm - RAL 9010 12 Stanzen zur Befestigung an der Wandplatte Wanddicke: 60mm
BESCHLAG	1 Türgriff aus Edelstahl 2 Edelstahlscharnieren 1 Schlossplatte aus Edelstahl
VERPACKUNG	In einem Karton Türgummi und Türgriff nicht montiert. Inklusive Montagezubehör. Scharniere am Türrahmen befestigt.



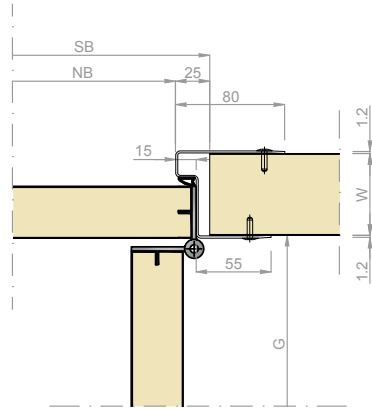
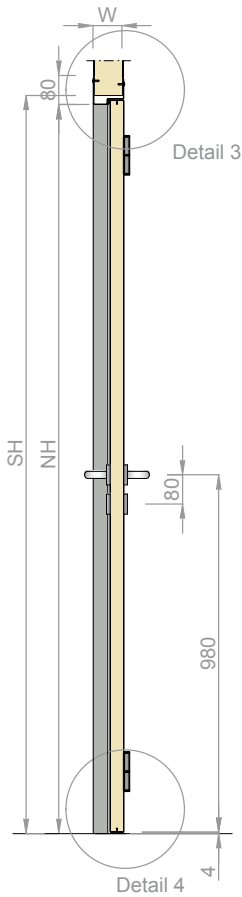
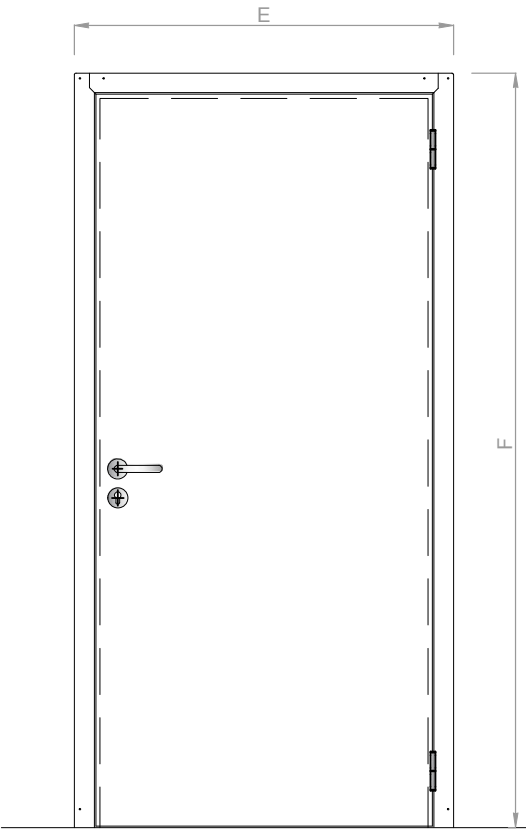
Pontstraat 80  
Waregem zone 11B  
B-8791 Beveren-Leie

T: +32 56 71 04 94  
F: +32 56 70 32 87  
info@isomasters.com  
www.isomasters.com

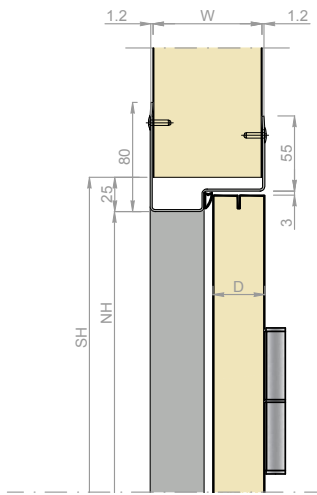


BBE  
TECHNISCHE DATEN

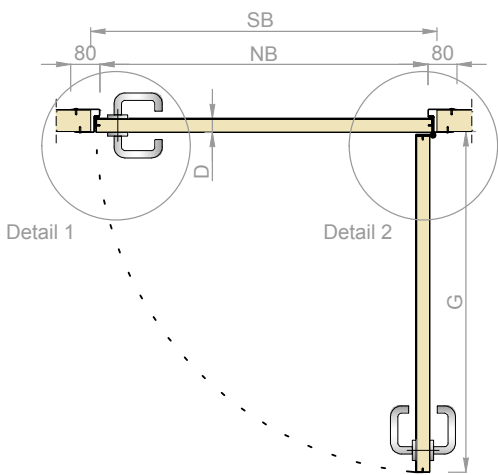
TECHNISCHE  
ZEICHNUNGEN



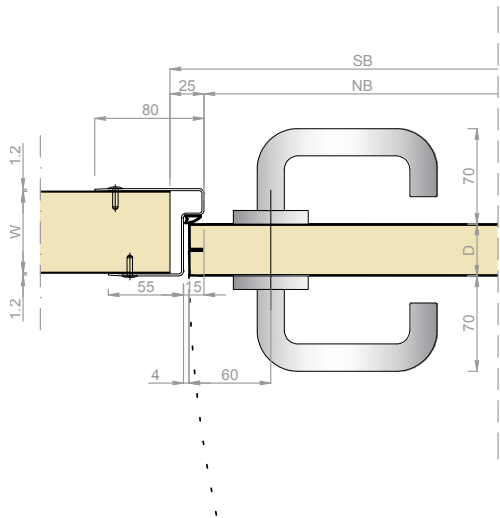
Detail 2



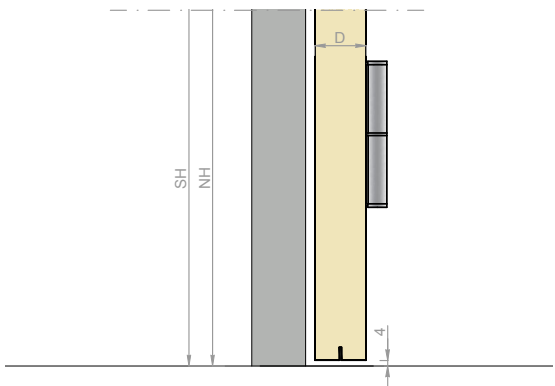
Detail 3



SB = NB + 50  
SH = NH + 25  
D = 40  
E = NB + 160  
F = NH + 80  
G = NB + 35  
W = 60mm



Detail 1



Detail 4